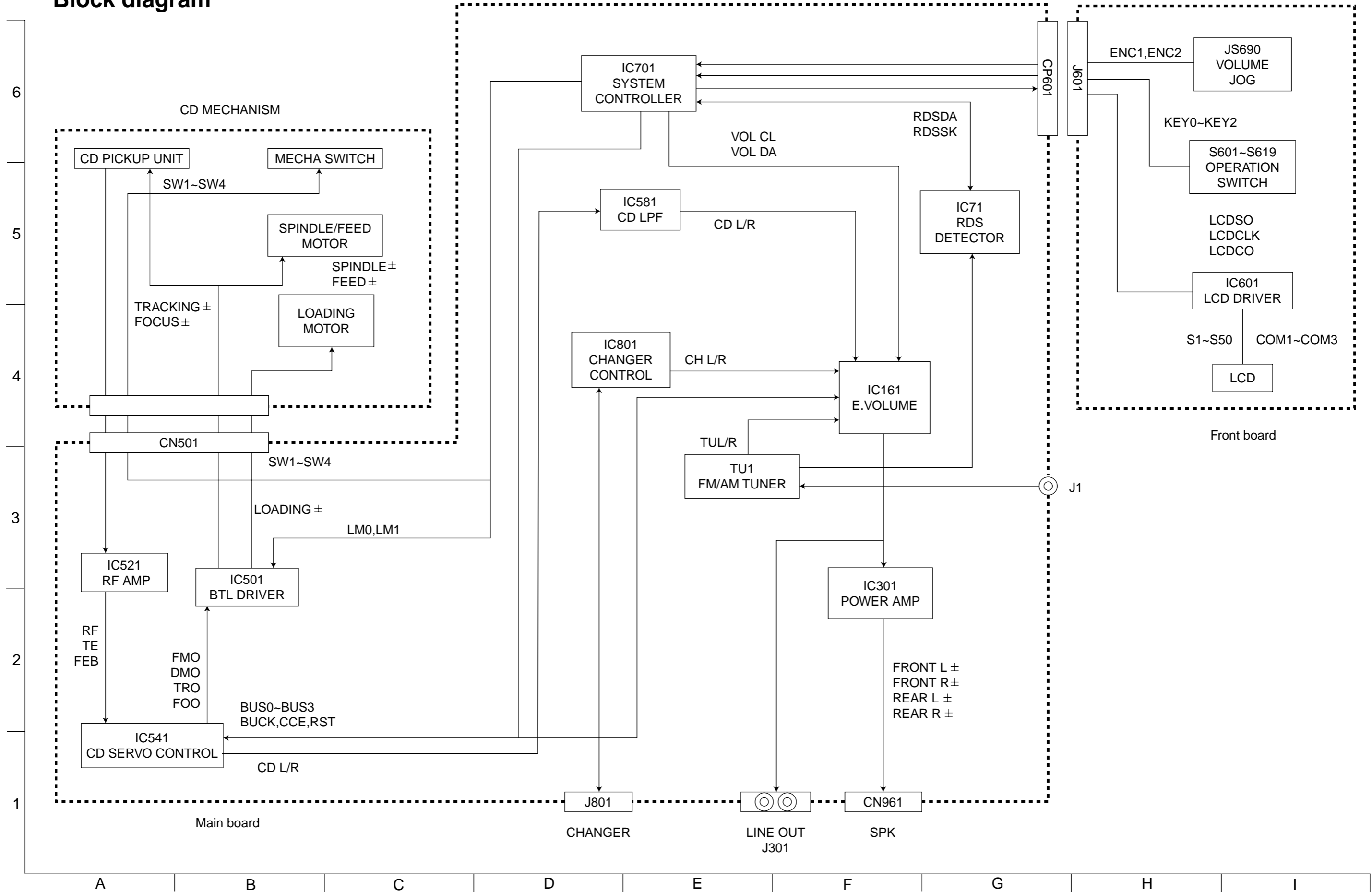


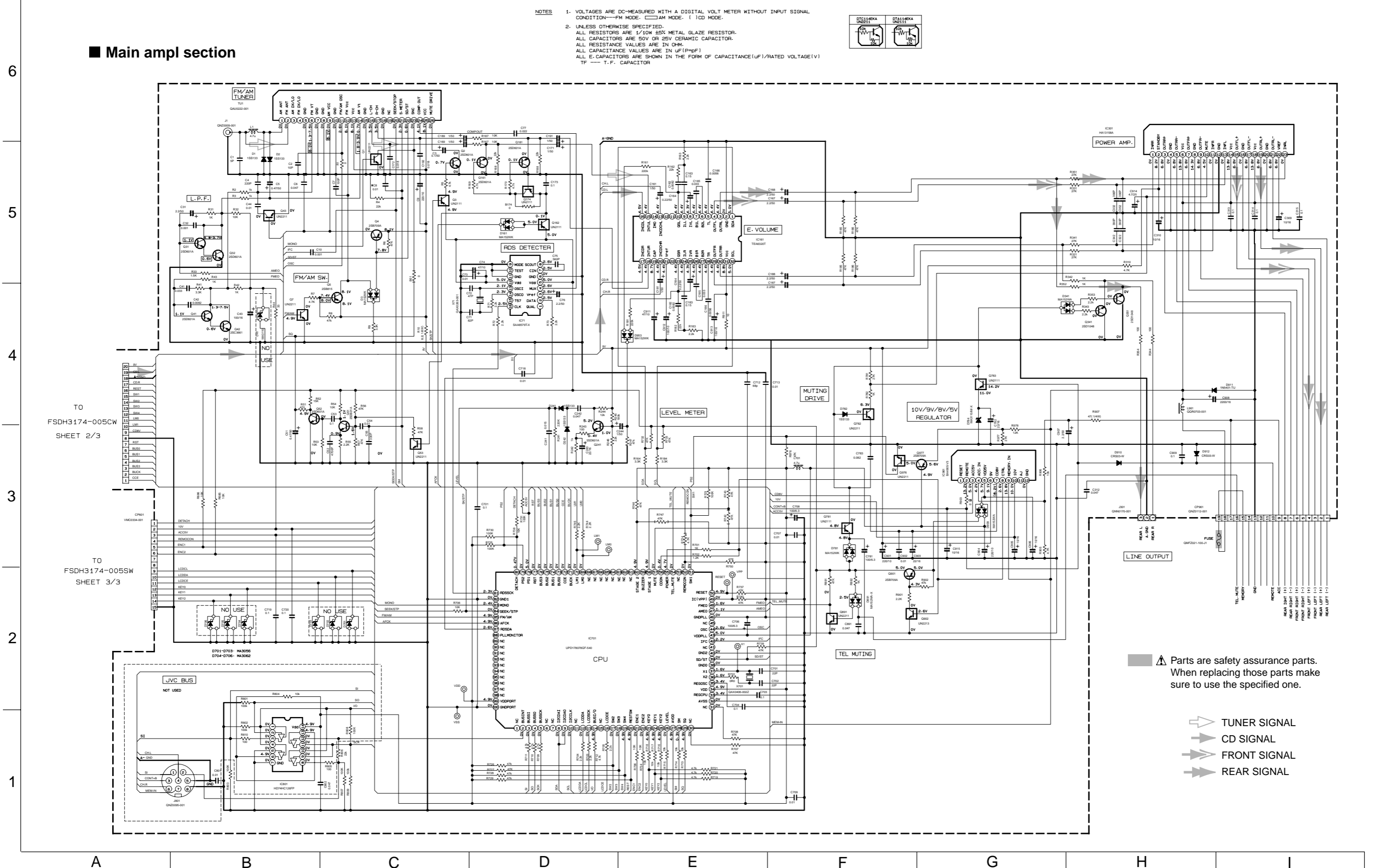
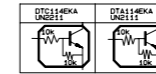
Block diagram



Standard schematic diagrams

Main ampl section

- NOTES**
1. VOLTAGES ARE DC-MEASURED WITH A DIGITAL VOLT METER WITHOUT INPUT SIGNAL CONDITION—FM MODE. □ AM MODE. |) CD MODE.
 2. UNLESS OTHERWISE SPECIFIED, ALL RESISTORS ARE 1/10W ±5% METAL GLAZE RESISTOR. ALL CAPACITORS ARE 50V OR 25V CERAMIC CAPACITOR. ALL RESISTANCE VALUES ARE IN OHM. ALL CAPACITANCE VALUES ARE IN UF(P=PF). ALL E. CAPACITORS ARE SHOWN IN THE FORM OF CAPACITANCE(UF/1/RATED VOLTAGE(V))
- TF — T.F. CAPACITOR



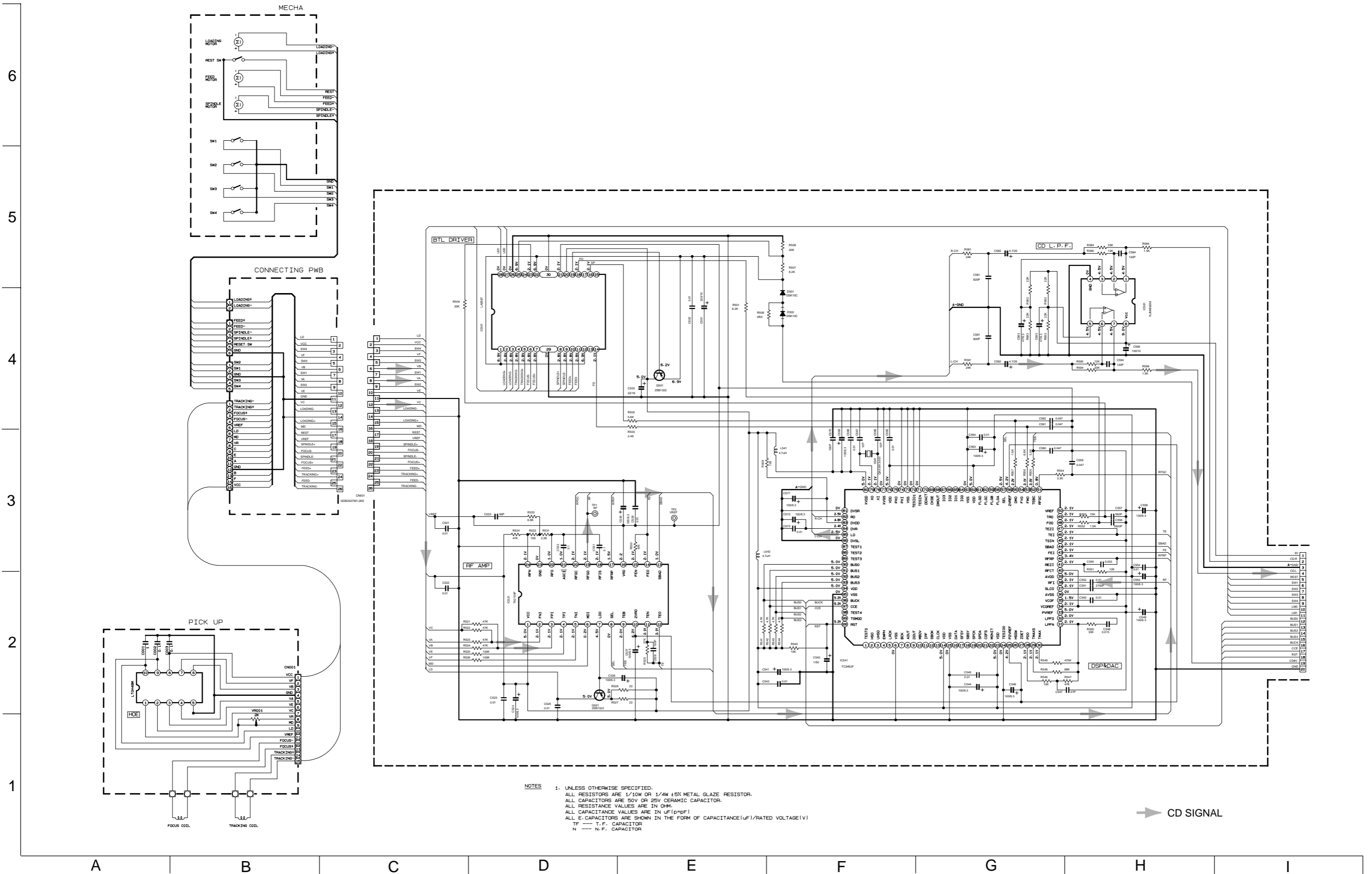
TO
FSDH3174-005CW
SHEET 2/3

TO
FSDH3174-005SW
SHEET 3/3

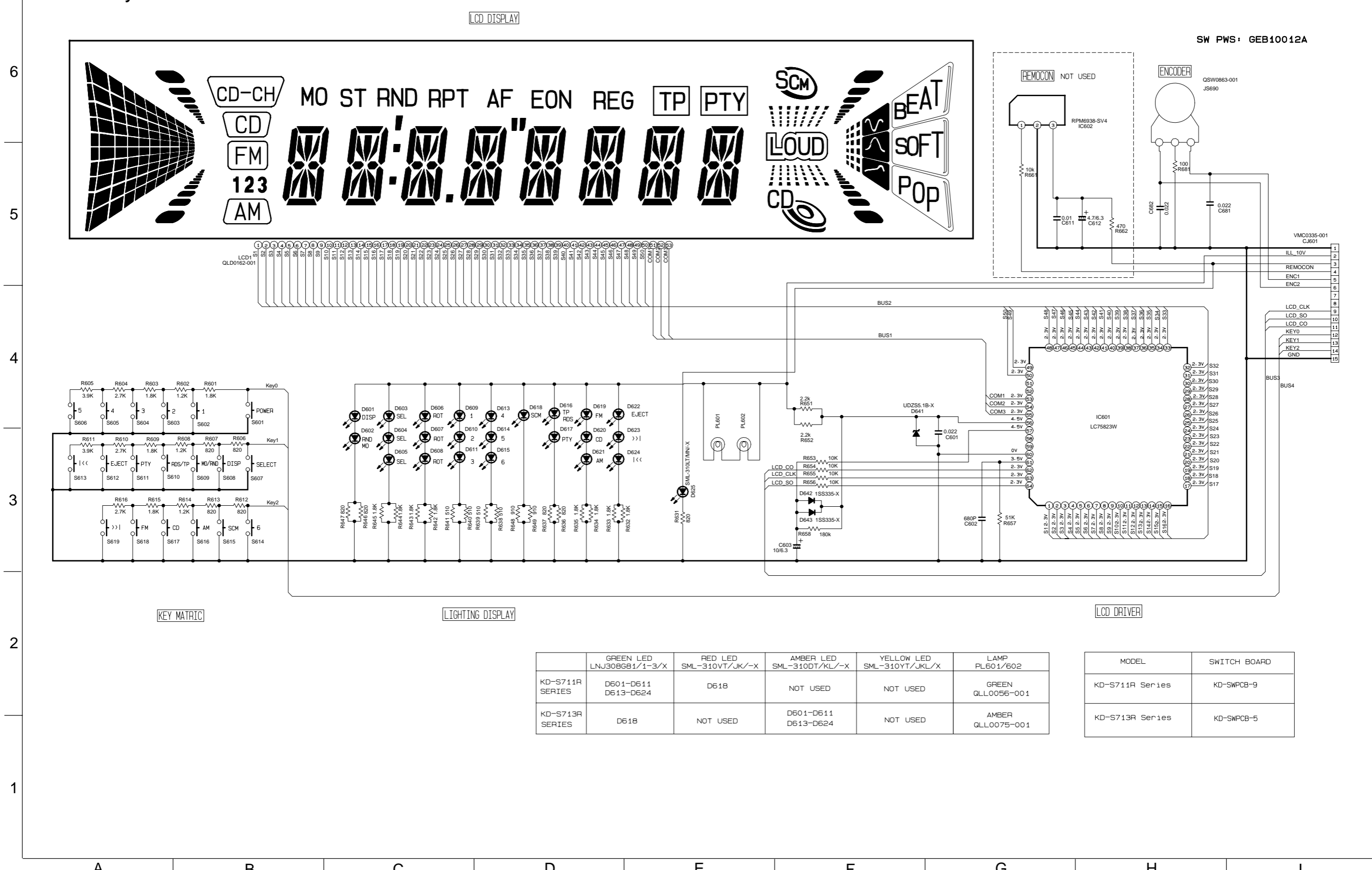
⚠ Parts are safety assurance parts. When replacing those parts make sure to use the specified one.

- ➡ TUNER SIGNAL
- ➡ CD SIGNAL
- ➡ FRONT SIGNAL
- ➡ REAR SIGNAL

CD servo control section



■ LCD & Key control section

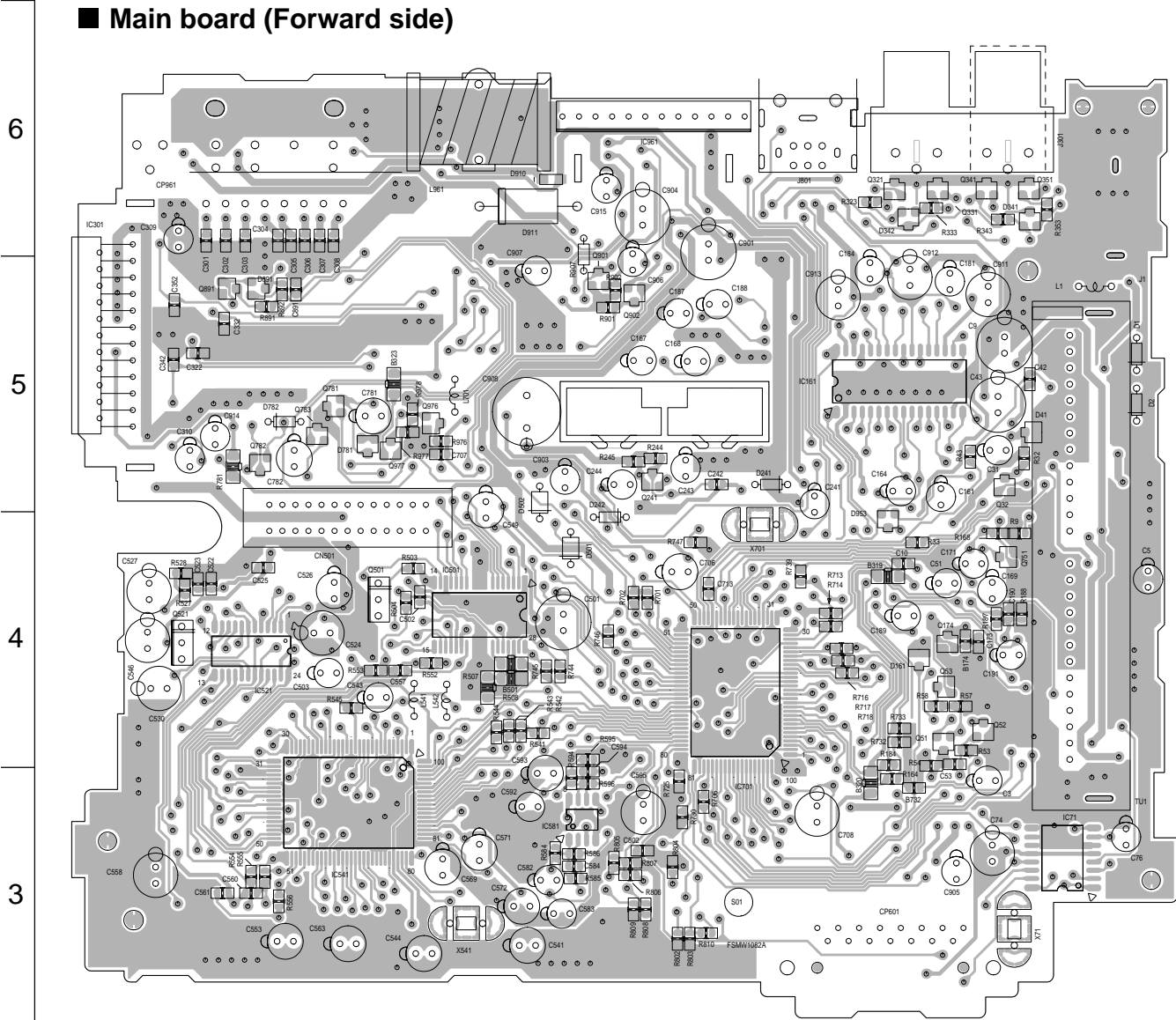


	GREEN LED LNJ308G81/1-3/X	RED LED SML-310VT/JK/-X	AMBER LED SML-310DT/KL/-X	YELLOW LED SML-310YT/JKL/X	LAMP PL501/602
KD-S711R SERIES	D601-D611 D613-D624	D618	NOT USED	NOT USED	GREEN QLL0056-001
KD-S713R SERIES	D618	NOT USED	D601-D611 D613-D624	NOT USED	AMBER QLL0075-001

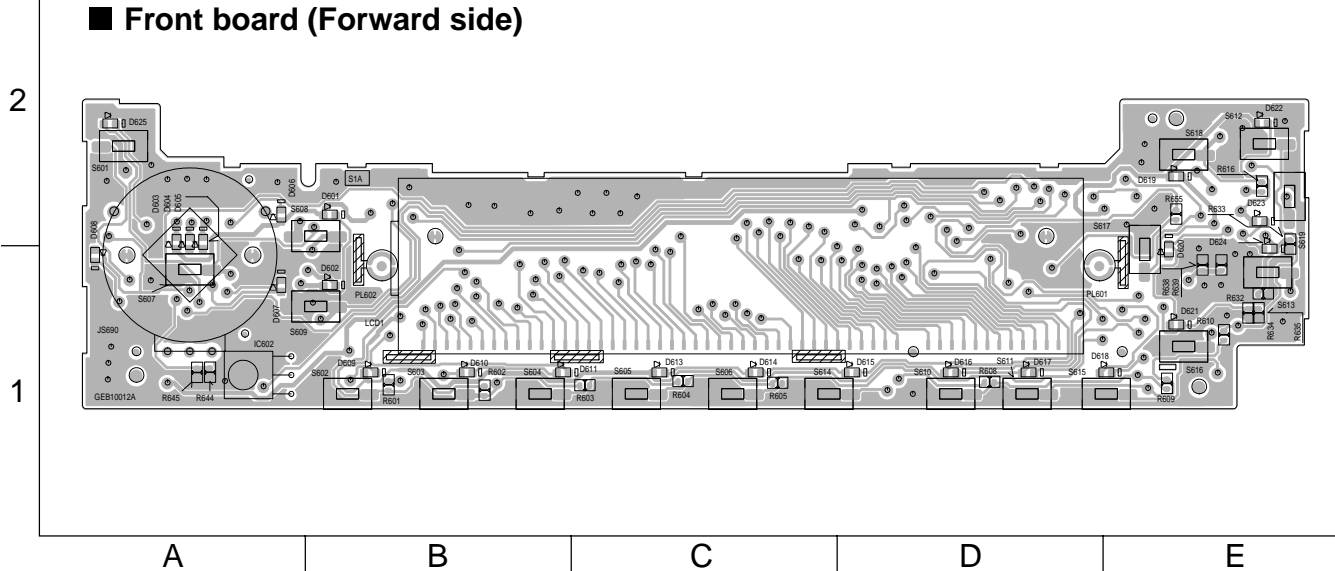
MODEL	SWITCH BOARD
KD-S711R Series	KD-SWPCB-9
KD-S713R Series	KD-SWPCB-5

Printed circuit boards

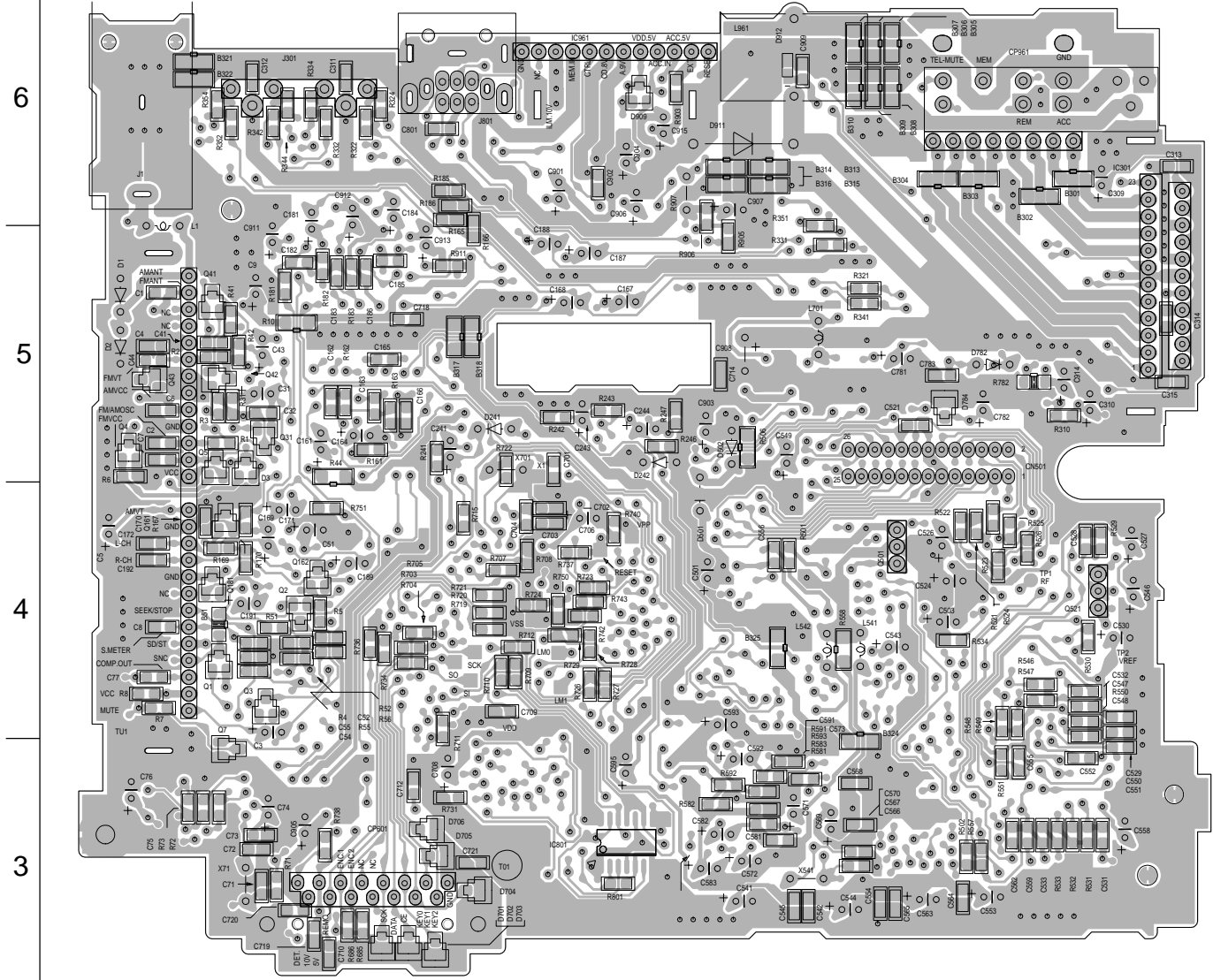
■ Main board (Forward side)



■ Front board (Forward side)



■ Main board (Reverse side)



■ Front board (Reverse side)

